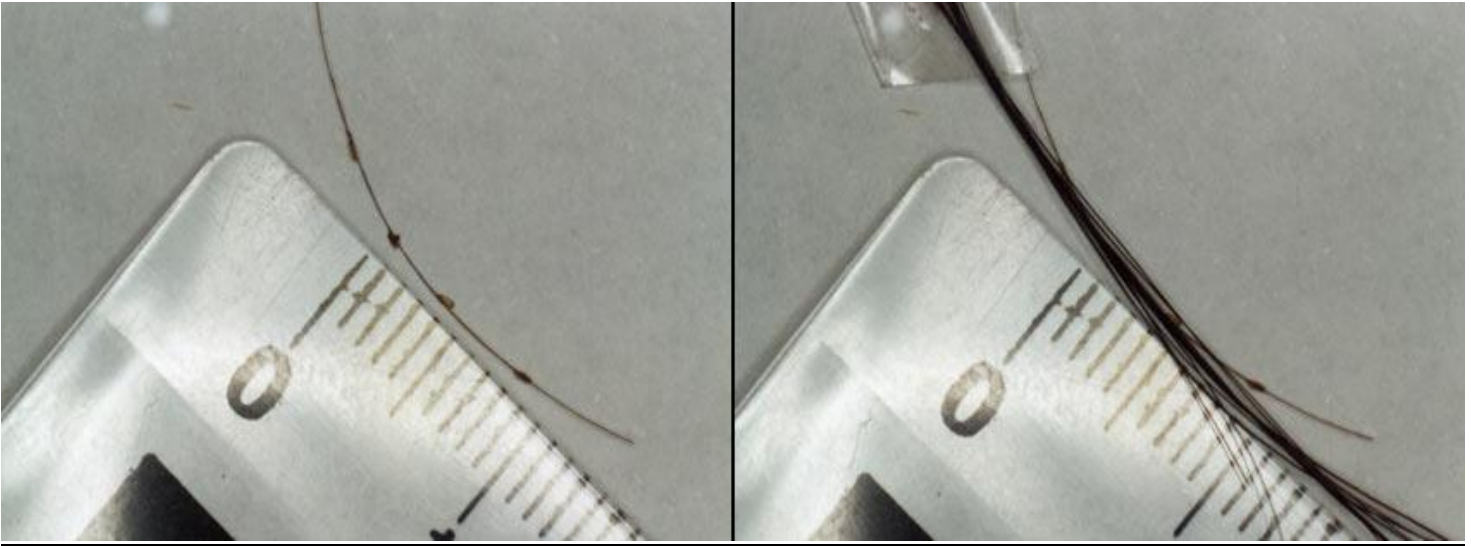


## PICTURES / RESOURCES



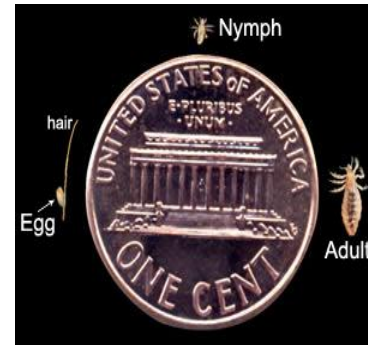
A head louse on a scalp.



Head lice are  
2 - 4 mm long.



Eggs are the  
size of a pinhead.



## VIDEO ON HOW TO INSPECT FOR NITS/EGGS

[http://headliceinfo.com/freemovies/flash/nitcheck\\_demo.html](http://headliceinfo.com/freemovies/flash/nitcheck_demo.html)

*The following video has been obtained from the Bergen County Department of Health Services (2007)*

<http://www.state.nj.us/health/index.shtml>

<http://www.bergenhealth.org/>

<http://www.cdc.gov/lice/index.html>

<http://www.headlice.org/>

<http://www.dhpe.org/>

<http://www.kidshealth.org>

<http://www.hsph.harvard.edu/headlice.html>